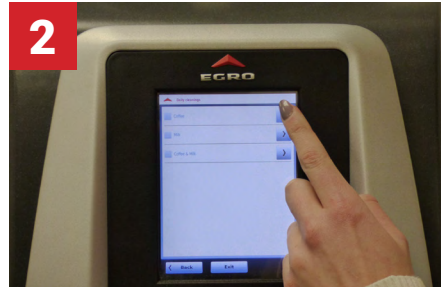


## Egro One Daily Coffee Cleaning



Tap the clock rapidly 4 times to enter the cleaning program menu.



Select the "Coffee" cleaning from the options.  
Note: If the machine is connected to a milk storage refrigerator, refer to the Daily Coffee and Milk Cleaning guide.



Open the front door, remove the bin, and dispose of the grounds. Wipe the grounds drawer clean, replace the bin, and close the front door. Confirm on-screen that you have emptied the grounds bin.



When prompted on-screen, insert one (1) Coffee Machine Cleaning Tablet into the chute on top of the machine.



After the automated cleaning has been completed, tap "Exit" to complete the cleaning.



### **DO NOT SHUT THE MACHINE OFF DURING CLEANING!**

It will cause the machine to become disabled and your warranty may be voided. Shutting off the machine will NOT reset the cleaning counter. The only way to unblock a machine that has been blocked due to lack of cleaning is to perform the complete daily cleaning.



### **Cleaning Product Re-Order Information**

To re-order the Egro Coffee Machine Cleaning Tablets, please send your orders to:  
[orders@ranciliogroupna.com](mailto:orders@ranciliogroupna.com)

**Egro Coffee Machine Cleaning Tablets**  
Product # 69000427

We offer an Auto-Ship Cleaning Supplies Program to automatically ship cleaning products to you. Call (630) 914-7900 to learn more about our program.

## Egro One

### Daily Coffee and Milk Cleaning



Tap the clock rapidly 4 times to enter the cleaning program menu.

Select the "Coffee & Milk" cleaning from the options.



Open the front door, remove the bin, and dispose of the grounds. Wipe the grounds drawer clean, replace the bin, and close the front door. Confirm on-screen that you have emptied the grounds bin.



Insert one (1) Coffee Machine Cleaning Tablet into the chute on top of the machine.



Remove the milk container from the refrigerator and add one (1) Milk System Cleaning Tablet to an empty container.



Place the container with the cleaning tablet in the refrigerator and insert the milk tube into the container. Tap "OK".



When prompted, remove the container and clean the milk tube with a damp towel. Replace the milk container and insert the milk tube.

Tap "Exit" to complete the cleaning.



#### Cleaning Product Re-Order Information

To re-order Cleaning Tablets, please send your orders to: [orders@ranciliogroupna.com](mailto:orders@ranciliogroupna.com)

**Egro Coffee Machine Cleaning Tablets**  
Product # 69000427

**Egro Milk System Cleaning Tablets**  
Product # 69000426



**DO NOT SHUT THE MACHINE OFF DURING CLEANING!**

It will cause the machine to become disabled and your warranty may be voided.

## Egro One

### Daily Steam Wand Cleaning



Prepare solution by combining an Egro Milk System Tablet with 16 oz of water (or until steam tip is fully submerged).



Activate the steam wand until the solution is heated and allow the wand to soak in the solution for 10 minutes.



Dispose of the cleaning solution and refill with fresh water. Activate the steam wand until the water is heated.



Dispose of the water and wipe the steam wand with a clean towel.

\*For iSteam wands, unscrew the nozzle and clean



#### Cleaning Product Re-Order Information

To re-order the Egro Milk System Cleaning Tablets, please send your orders to: [orders@ranciliogroupna.com](mailto:orders@ranciliogroupna.com)

#### Egro Milk System Cleaning Tablets

Product # 69000426

We offer an Auto-Ship Cleaning Supplies Program to automatically ship cleaning products to you. Call (630) 914-7900 to learn more about our program.

## Egro Next/One

### Weekly Bean Hopper Cleaning



1  
Unlock the bean hopper by pulling the metal latch on the front of the bean hopper until it clicks. If installed, unlock the bean hopper lid with the provided key.



2  
Lift the bean hopper to remove.



3  
Remove the lid and empty the coffee beans into a container. Wipe the hopper clean with a dry cloth. Periodically, the hoppers can be cleaned with soap and water or in a dishwasher.



4  
Once the hopper has been dried completely, refill with coffee beans.

To reattach the hopper, insert the back guides first. Push the metal latch forward until it clicks to lock the hopper.



## Egro One

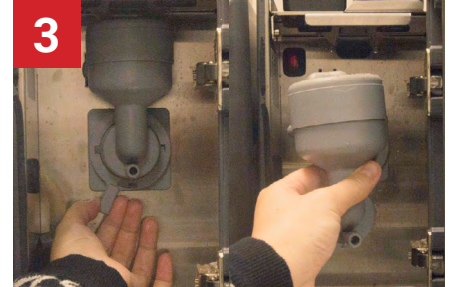
### Weekly Powder Module Cleaning



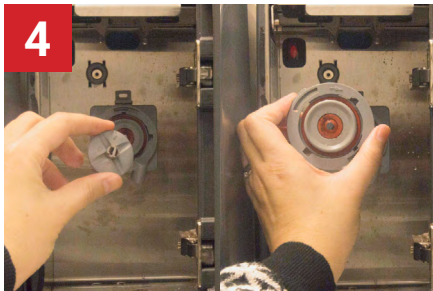
Open the front door of the powder module.



Press the power button to switch off the powder module. Pull out the tube connected to the mixer.



Unlock the mixer by turning the knob to the right. Take the mixer unit out.



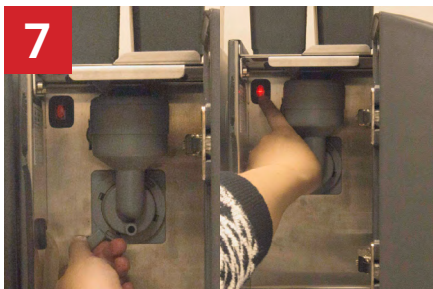
Pull out the mixer ring and the knob simultaneously.



Dissolve an Egro Milk System Cleaning Tablet in a container with warm water. Place pieces of the mixer unit into the solution. Allow to soak for at least 1 hour.



Wipe the powder module with a clean damp towel. Remount the knob and the ring back into the powder module pushing firmly until it clicks.



Reassemble the mixer unit into the powder module. Turn the knob to the left to lock. Reconnect tube to the mixer. Push power button to turn on the powder module.

## Egro One

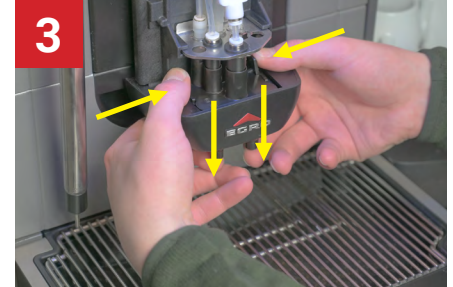
### Weekly Brewing Outlet Cleaning



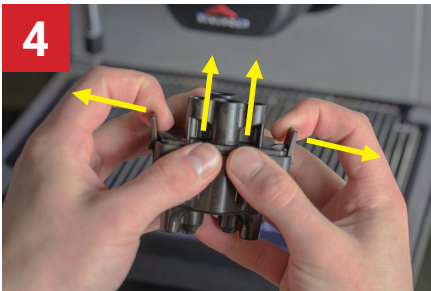
Slide the silver outlet cover up.



Prepare cleaning solution by dissolving 1 Egro Milk System Cleaning Tablet in a container of hot water. Make sure that the spout assembly will be completely immersed.



Push the tabs on the brewing spout assembly in and down to disconnect it from the machine.



Separate the brewing spout assembly by pushing out on the tabs while pushing up on the upper spout assembly. Soak the separated spout assembly in the solution for at least 1 hour.



Reassemble the spout and reconnect it to the machine by pushing firmly upwards. Make sure all parts snap into place.



Slide the silver outlet cover down. The cleaning has been completed.